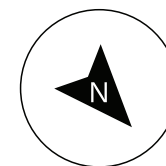
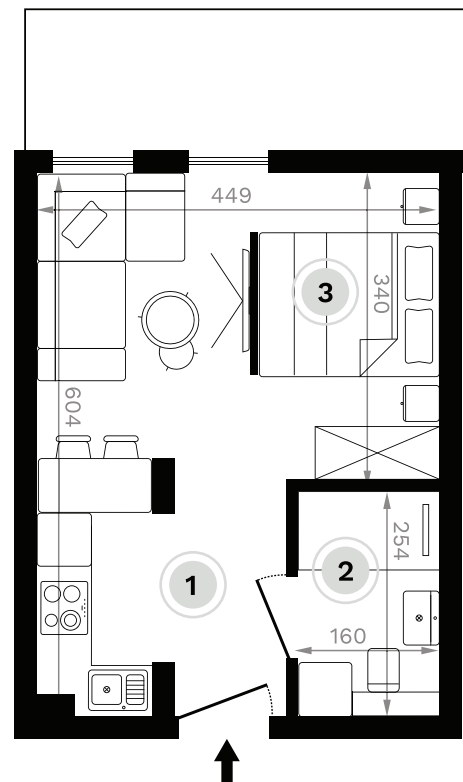
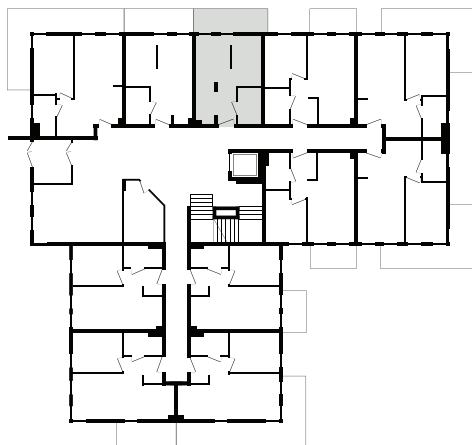


Wykaz pomieszczeń:

- | | |
|------------------------------|----------------------|
| 1. Salon z aneksem kuchennym | 14,87 m ² |
| 2. Łazienka | 3,80 m ² |
| 3. Aneks kuchenny | 7,06 m ² |

Poziom 0:



Biuro sprzedaży:
ul. Lecha 6
62-025 Kostrzyn

Kontakt:
+48 795 808 750
sprzedaz@pine.apartments